

# Are topographic maps a vital tool for you? If so, sign up for our Terrain Navigator Pro Workshop

Pacific NW  
Upcoming Dates

Oct 29  
Friday, 2004

Jan 28  
Friday, 2005

- ❖ See what Maptech's Terrain Navigator Pro can do for you.

*"Your new Terrain Navigator Pro is the greatest single mapping solution I have seen for my job position. I am an RF Design Engineer for Edge Wireless, a member of the ATT Wireless Network..."*

**Wayne Wetmore**

- ❖ Quickly learn how to put Maptech to work for you, whether on the job or for serious play.

*"The number of search tools alone makes Terrain Navigator Pro a premier mapping package...Terrain Navigator Pro is the Rolls Royce."*

Joe Bell, L.S.,  
Professional Surveyor Magazine

- ❖ Choose our morning interactive presentation or our afternoon hands-on workshop or both.

*"We have explored other mappings programs, but we have selected Maptech's Terrain Navigator Pro as our county SAR standard. Lives are at stake and we want mapping software that delivers."*

*"While many of us have learned the program on our own, all of us have benefited from Rick Hood's useful and enjoyable Maptech workshops."*

Ron Ryals, King County SAR Coordinator  
Washington State

- ❖ Receive a **significant** purchase discount offsetting the cost of the workshop.

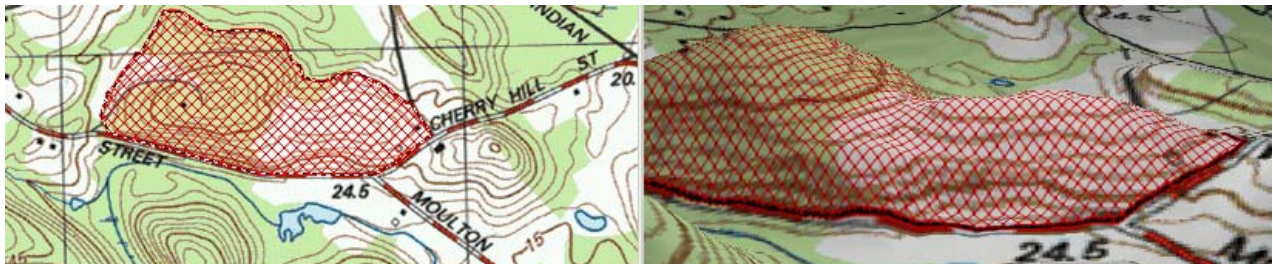
*"To effectively plan a public lands hunt around a reservoir, you must start with your topo maps and there is no better source than Maptech with its Terrain Navigator software for your PC."*

Alex Webb, Whitetail Journal

- ❖ Contact Rick Hood, [rick@hoodcs.com](mailto:rick@hoodcs.com) or 425.640.8134, for other information or custom requests.

*How any real estate professional can work on land transactions without Maptech's Terrain Navigator is hard for me to imagine. It is the best investment for tools of the trade I have ever made.*

Harold R. (Huddy) Hudgens, Jr., ALC #985  
President/Broker/Owner of Albany Land Co



# Terrain Navigator Pro Workshop Fact Sheet

## ***The Workshop Overview***

A workshop for professionals and serious outdoor enthusiasts who need and use topographic maps and are seeking to learn or hone their skills with Maptech's cutting edge Terrain Navigator Pro mapping software on their computer, PDA, or with GPS.

## ***Our Workshop Rationale***

Maptech's Terrain Navigator Pro is a potent tool and can be learned on your own. However, if you want to get up to speed quickly, learn useful tips and techniques, and see real-world examples from your profession, this seminar is an outstanding choice.

## ***Who Should Attend***

Public Sector: Managers and senior field personnel involved with law enforcement, fire/rescue, SAR, municipal or emergency planners, and land and parks managers.

Private Sector: Owners and senior employees involved with rural real estate, camps and guide services, surveying, wilderness sports events, or anyone with a serious map need whether for business or pleasure.

## ***Materials Provided***

Full demo software and supporting handout are provided. (You will also receive a *substantial* discount coupon for Maptech products.)

## ***Two Workshop Format***

The morning session focuses on what Maptech's mapping software can do for you, drawing on your industry, professional, or personal needs. While there is an opportunity to use the software during the extended break, this is primarily a series of interactive demonstrations, driven by your questions and needs, to better see how and where you will benefit using this mapping software; lively dialog is anticipated and encouraged. (Limited to 12 persons.)

## ***Attend One or Both***

The afternoon session is very much a hands-on workshop geared to those familiar with mapping software, and seeks to provide you with tips and tools to better use Maptech for your needs. (Participants, if possible, should bring laptops or PDA and a GPS with cable. This session is limited to 9 persons.)

## ***Dates, Times, and Locations***

Next offered on Friday, October 29, 2004 and Friday, January 28, 2005 in the Seattle, Washington area at 331 Andover Park East in Tukwila. The morning session is from 9 am to 11:30 am and the afternoon session is from 1 pm to 4 pm. We can host these or custom workshops at your business, agency, or organization site.

## ***Upon Completion***

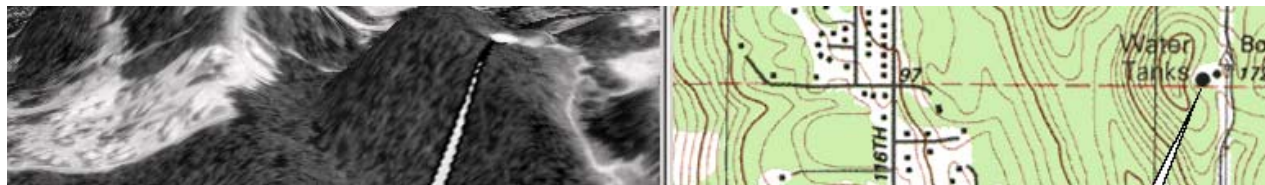
You will have a good working knowledge of Maptech's Terrain Navigator Pro 6.0 and how to use it to better meet your real world needs and demands.

## ***Cost***

\$50 for the morning session, \$75 for the afternoon session, or \$99 for both. Inquire about our same company, agency, team, or department discounts as well as our "on-site" programs.

## ***Contact and Sign Up***

Contact us at [info@hoodcs.com](mailto:info@hoodcs.com) or 425.640.8134 with any questions you might have. To learn more about Maptech or download a demo program, visit [www.maptech.com](http://www.maptech.com). To sign up, please use the following registration.



# Terrain Navigator Pro Registration Form & Schedule

Name \_\_\_\_\_

Address \_\_\_\_\_

City, State, Zip \_\_\_\_\_

Phone \_\_\_\_\_

Email \_\_\_\_\_

Email (confirm) \_\_\_\_\_

Profession or primary reason for  
attending the workshop \_\_\_\_\_

Morning (\$50), afternoon (\$75),  
or both sessions (\$99) \_\_\_\_\_

Will you bring a laptop, PDA, or  
GPS \_\_\_\_\_

Circle your workshop selection

Friday, October 29, 2004   **morning**   **afternoon**   **both sessions**

*(Location is within 15 minutes of  
Seattle Tacoma Airport at  
331 Andover Park E in Tukwila.)*

Friday, January 28, 2005   **morning**   **afternoon**   **both sessions**

*Registration is "first received, first enrolled" and limited to 12 for the morning and 9 for the afternoon session.*

*Payment by check is due 15 days prior to the workshop.*

*All but \$25 will be refunded, if canceling prior to the 15-day deadline.*

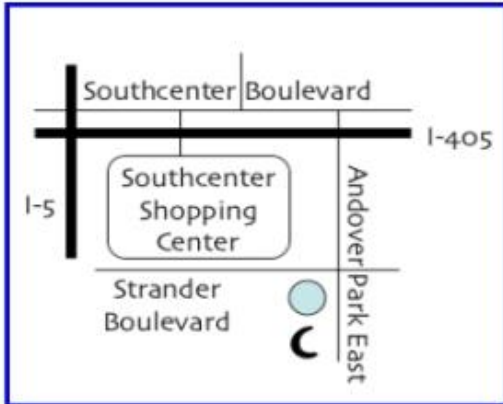
*Full credit for a future workshop will be extended for canceling within 15 days of the workshop.*

*Mail checks and this form to:*

**Rick Hood**  
**22631 -- 87<sup>th</sup> Pl W**  
**Edmonds WA 98026**

*Your cancelled check is your receipt and confirmation.*

# Terrain Navigator Pro Workshop Site & Directions



These maps are from the Centerplex website,  
[www.centerplex.net/where/smap.html](http://www.centerplex.net/where/smap.html).

**Board Room -- Ground Floor --  
Centerplex C: 331 Andover Park  
East -- Tukwila, Washington**



The "round building" at the corner of Strander Blvd & Andover Park East

