

The NJOIT/OGIS is pleased to announce that the Statewide 2002 digital ortho photography is now available for download. The images can be downloaded from the image warehouse, via the NJGIN portal (<http://njgin.nj.gov>). Due to their large size, image files are provided initially as compressed zip files. You will need to utilize a compression utility program, such as WinZip to “unzip” the files. Each zip file, once downloaded and extracted, will generate four files. One file, the **.sid**, is the actual photograph, in MrSID format. A second file, a **.sdw**, contains coordinate information that is needed if you intend to overlay the photograph with other spatially oriented data, such as a GIS parcel layer. The two remaining files, the **.xml** and the **.txt** files, are metadata files that contain details about the creation and source of the image files. Both metadata files contain the same information. The xml file is intended for GIS users who may want to import the metadata into ArcGIS. The txt metadata file is intended for general user reference. While we encourage you to read over the metadata documents, the files are not required to view the images. It should be noted that **html** metadata is available for separate download from the “Metadata” tab on the New Jersey Image Warehouse ([http://njgin.nj.gov/OIT\\_IW/index.jsp](http://njgin.nj.gov/OIT_IW/index.jsp)).

In the event that you do not have access to a standard desktop GIS product that supports MrSID Imagery, such as ESRI’s ArcView, either of the following two freeware programs can be downloaded and installed on your computer; which will allow for the viewing of the image files in their native MrSID format.

### **1. LizardTech’s Express View Browser Plug In**

The ExpressView Browser Plug in gives standard Windows Web browsers the ability to natively view MrSID images. The intuitive graphic interface allows you to view, magnify, print and save images. ExpressView Browser Plug-in is free for individual use and is easily installed as a plug-in for Netscape® and Internet Explorer web browsers. This application is intended for those who want to view only one (photo) image at a time and for those who do not need to overlay the photos with other vector based (GIS) data.

If you need to view more than one image at a time, you should download and install the TatukGIS viewer. See below.

### **2. TatukGIS viewer**

The TatukGIS Viewer software is intended for those who have a basic knowledge of GIS software programs. This freeware program provides you with a number of rich GIS features that are generally found in costly, commercially available desktop GIS products. Even with its wide array of features, the program interface is intuitive and easy to use.

The program allows for the viewing of multiple geo-referenced raster images and supports many (if not all) of the most common raster image file formats, including MrSID. The application also supports many of the most common CAD and GIS file types.

Refer to the following pages for viewer downloading and installation instructions.

## Installation Instructions

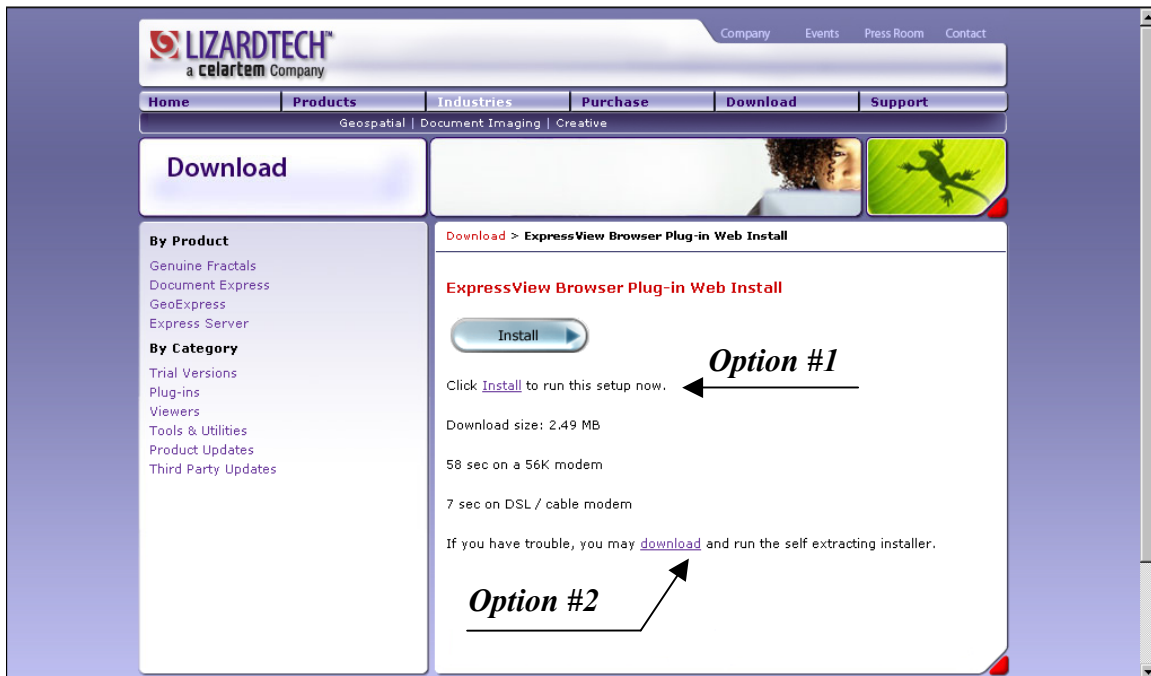
### **LizardTech's Express View Browser Plug In**

<http://www.lizardtech.com/download/files/win/expressview/webinstall/>

Once the hyperlink has been launched, you will be directed to the “ExpressView Web Install” area of LIZARDTECH’S website. Once at this location, you will have two installation options.

The first choice (*Option #1*) will be to perform the installation on line. This process will install the program on your computer without the need for downloading any files. This works very well and requires the least amount of user interaction.

The second choice (*Option #2*) is to physically download the application file onto the your computer. This option is useful if you intend to install the application on more than one computer. Once the file has been downloaded, simply double click on the **exview\_setup.exe** file and follow the prompts. It is recommended that you accept the defaults during the installation process.



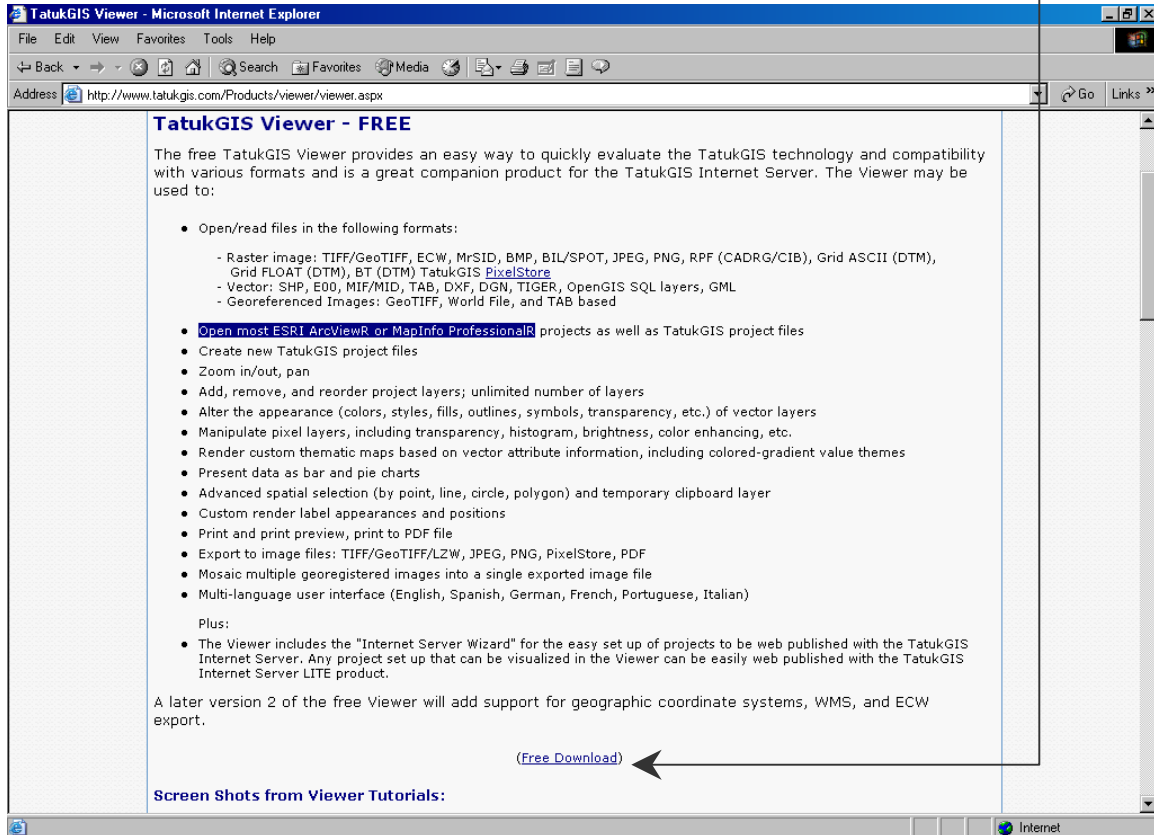
Once the program is installed, simply launch Internet Explorer, “Browse” to the location where the image files are stored and select the desired file.

It should be noted that you will have to change the list of file types from “HTML Files” to “All Files” before the image files will be displayed.

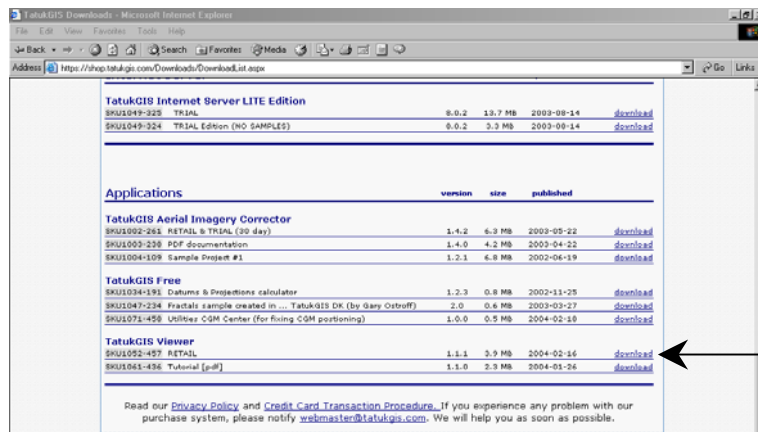
**TatukGIS viewer**

<http://www.tatukgis.com/Products/viewer/viewer.aspx>

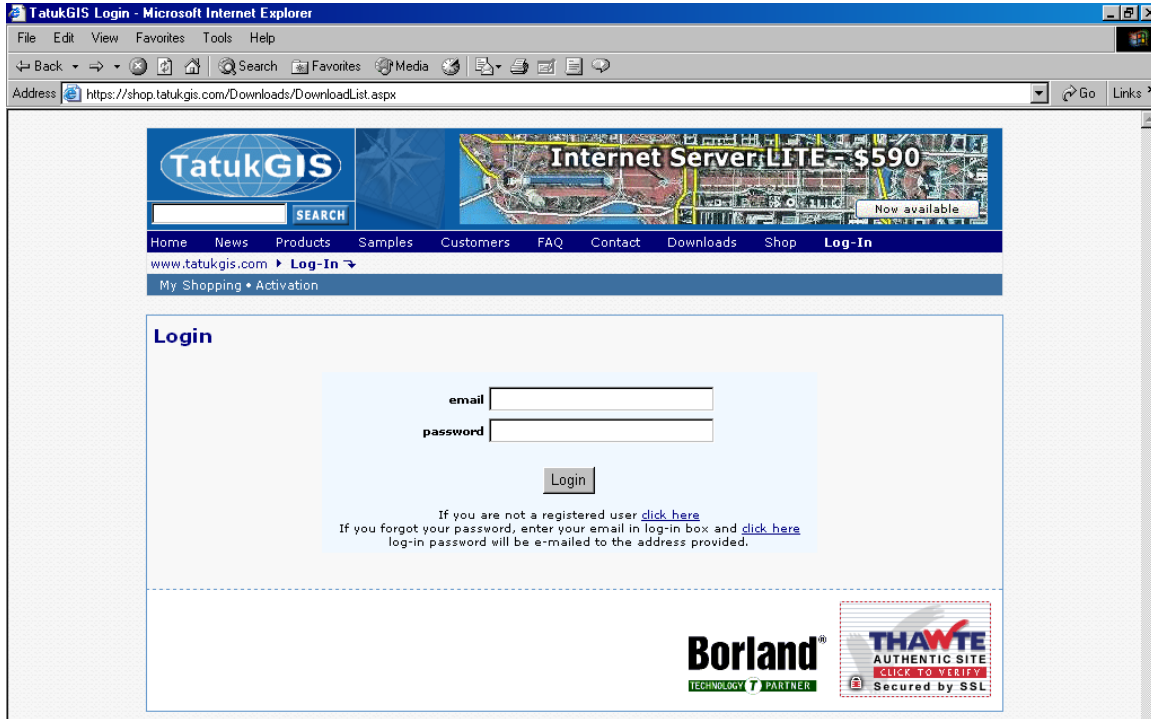
Once the hyperlink has been launched, you will be directed to the “TatukGIS Free Viewer” web page. Once at this location, you should take a moment to read the software description. When ready, click on the “Free Download” link.



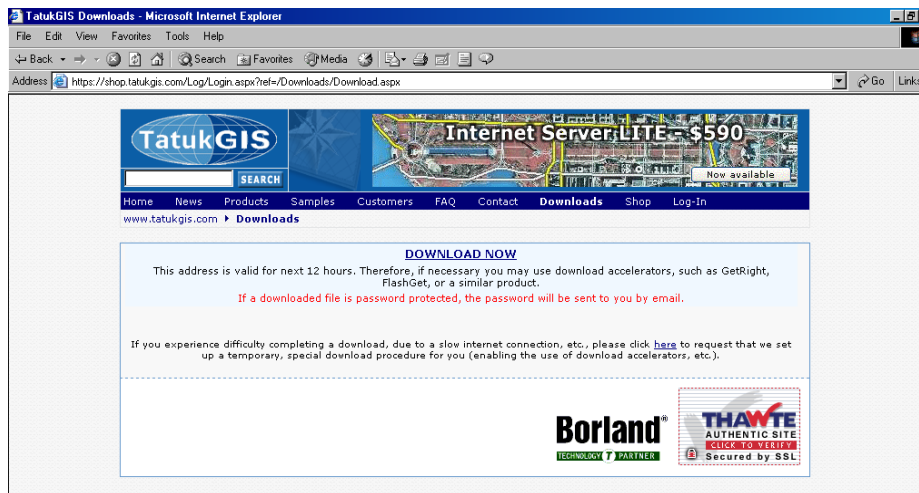
This link will bring you to the TatukGIS “Downloads” page. Scroll to the bottom of the page and select the **SKU1052-457** item and then click on “download”.



Once the download link is invoked, you will be presented with a Login page that will require first time users to enter an email address and to obtain a password, which will be sent to your email address in a few minutes. Once the email and password have been entered, you will be presented with the following screen.



Once the email and password have been entered, you will be presented with the following screen. Click on the **DOWNLOAD NOW** link to download the installation file to a location of your choice (can be a network or local drive). Once the file has been downloaded, navigate to that folder and double click on the “TatukGIS\_VWR\_1\_1\_1.exe” file and follow the prompts.



**Please note:** We have provided these instructions to help you view MrSID image files. If you have problems downloading a viewer, please check the instructions on the corresponding web site to see if any changes have been made. Since these are third party products, we have no control over revisions made to the products or the downloading processes.

We will try to monitor the sites for updates. However, if you become aware of problems or updates regarding these products before we do, please advise the [NJGIN Administrator](#).